

21 OCTOBER 2019

Term 4 Week 2

- 29 Oct - Willoughby Buddies Excursion
- 30 Oct - Yr 7 Vaccinations
- 7 Nov - P&C Meeting, 7pm
- 13 Nov - Parent workshop on wellbeing
- 26 Nov - Variety Christmas Party
- 4 Dec - Graduation & Secondary Social Event
- 11 Dec - Cromehurst Christmas Concert
- 16 Dec - Primary Awards
- 18 Dec - Students last day Term 4

Cromehurst News

Principal's Message

Welcome to Term Four.

I hope that all of our families had a pleasant and restful break from the school routine. Term four is traditionally very busy and this one is no exception. There are a number of upcoming events over the next few weeks and a list of these and corresponding dates has been included at the end of this edition. The two major events this term are the Secondary Graduation & Awards Dinner on 4 December and our famous Christmas concert which has been scheduled for 11 December. Please save both of these dates, detailed information regarding these events will be sent out shortly.



As you are aware, our school has a strong focus on wellbeing which is embedded into all of our programs across the school. We have been explicitly teaching resilience and a range of positive emotions and behaviours and include a wellbeing goal in all class programs. We are planning another parent workshop this term to outline what we are teaching and strategies for parents to reinforce this at home. The planned date is Wednesday, 13 November here at school. A note will be sent home this week with the details and we would like as many of our families as possible to attend as this is one of our major strategic directions and drives all aspects of our school plan.

I have attached a rather large document separate to the newsletter which outlines a range of service providers across the Sydney Metropolitan area. The providers are very diverse both in their support provision and location but it is a useful list for families to refer to when considering additional support. Many of the services listed are also registered NDIS providers and their provider number is included in the list. I would encourage you to keep this document even if you are not seeking additional services at this time as it is a very good starting point if your circumstances change.

Inside this issue:

<i>Principal's Message</i>	1-2
<i>General News</i>	3-4
<i>Notes</i>	5
<i>What's On</i>	6

We are currently confirming transport requirements for students who are accessing the Assisted School Travel Program (ASTP). The ASTP has provided the following dates in regard to the processing of new applications for transport for 2019 and 2020:

Principal's Message (continued)

PAGE 2

By Friday 15 November 2019 - submit any new student applications and variations to student transport for the remainder of 2019.

By Friday 29 November 2019 – submit transport applications for new students enrolling at your school in 2020 or current students whose families are seeking Assisted Travel in 2020.

The ASTP have a large volume of applications across the state and have indicated that these dates will be adhered to. Applications received after 29 November may not be processed in time for the start of the new school year. ASTP staff will be working continually over the December/January period so please ensure that your contact details are correct such as a current active email address and telephone numbers (landline and mobile) in the event that they need to contact you with any changes to your child's current transport.

They have also provided the following information regarding transport to services outside of school.

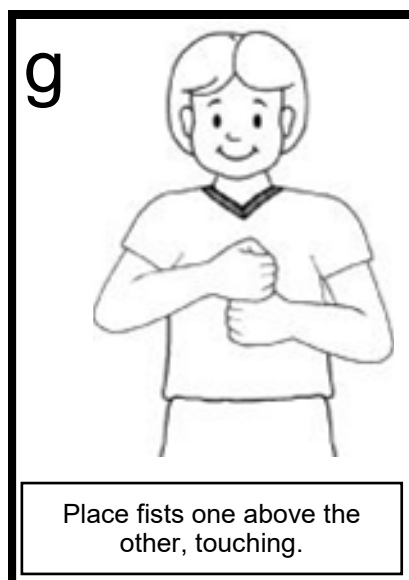
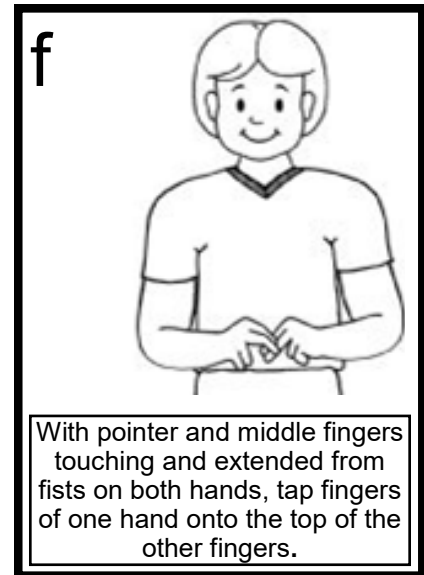
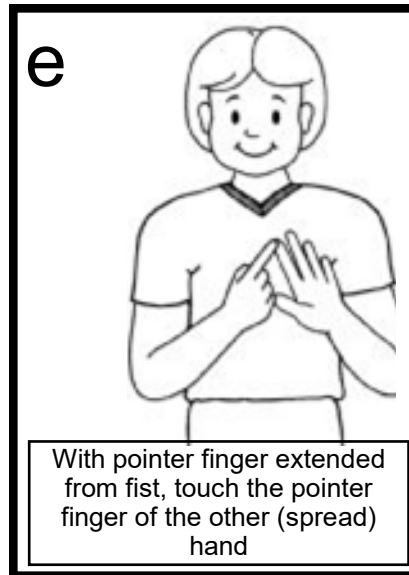
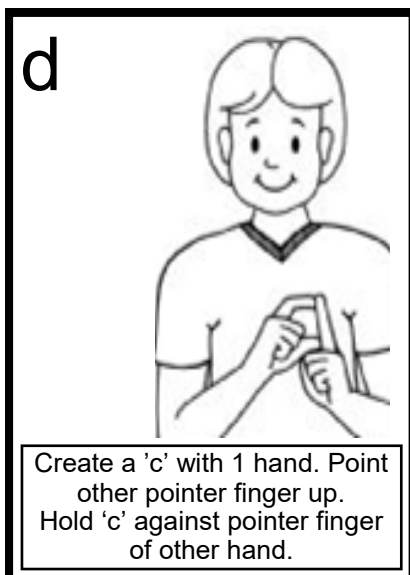
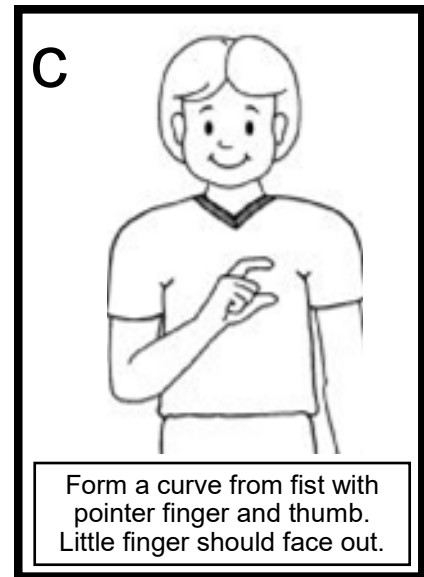
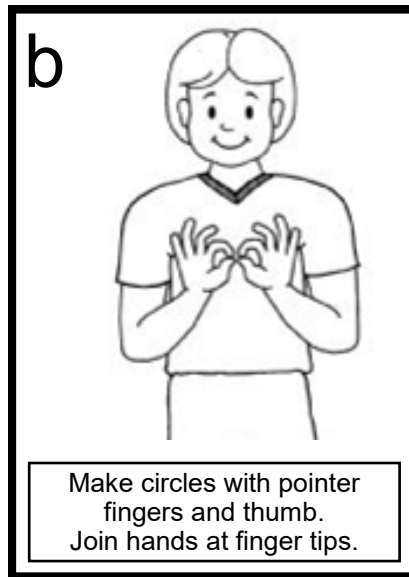
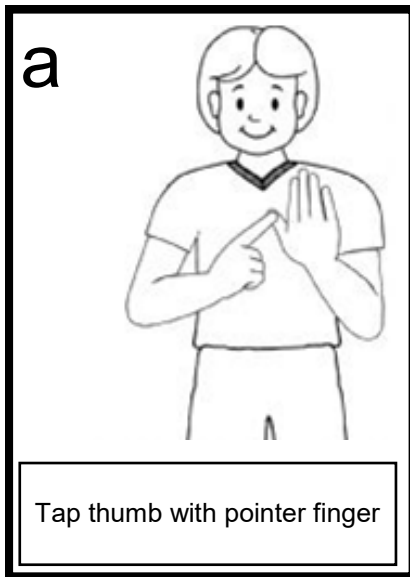
“On 1 July 2018, the NDIS became fully operational in NSW. However, the ASTP continues to provide ‘in kind’ assisted travel between home and school. Requests for transport to NDIS-funded services before or after school – such as respite, after-school programs, therapy or community access – should be discussed first with the student's NDIS planner or the National Disability Insurance Agency (NDIA). Please visit the department's website for information on the ASTP and NDIS at: <https://education.nsw.gov.au/public-schools/astp/ndis>.”

Finally as we move towards summer and some very hot weather can I please remind parents to ensure that their children have a hat and that sunscreen is applied before they leave home. We will reapply sunscreen during the day with the school supplied sunscreen or, if parents prefer, the sunscreen provided to the school for the use of your child. I have included the note regarding the use of sunscreen for you to sign and indicate your preference later in this edition.

Christine

General News

Signs of the week



General News (continued)

WORLD FESTIVAL OF MAGIC

The Rotary Club of North Sydney have kindly given our school tickets to the 4pm World Festival of Magic performance on Saturday 16 November 2019 at the Darling Harbour Theatre at the International Convention Centre Sydney.

If you would like to receive tickets please contact the school office.

For further information please visit www.wfom.com.au.



CAREFLIGHTS CHRISTMAS MAGIC MANIA

CareFlight are offering our school tickets to their 'Magic Mania' performances at 12.30pm, 2.30pm and 4.30pm on Saturday 14 December 2019 at Quaycentre (Sydney Olympic Park Sports Centre), Homebush.

If you would like to receive tickets please complete and return the form in the What's On section of this newsletter.



P&C News

SAVE THE DATE - This term's P&C meeting will be held offsite at 7pm on Thursday 7 November 2019. Stay tuned for more details.....



Notes



Principal: Christine Moulds

8 Nelson Road
LINDFIELD NSW 2070
Telephone: (02) 9416 9293
(02) 9416 9281
Facsimile: (02) 9416 1393

Dear Parents and carers

All schools have a responsibility to provide a safe environment for students and staff and this includes providing adequate protection from the sun. Our school takes sun safety seriously and implements a range of strategies that protect students from the damaging effects of the sun such as, wearing sun safe hats, clothing and sunglasses, seeking shade during peak UVR times during the school day and wearing SPF 30+ (or higher) sunscreen. We encourage you to apply sunscreen to your child prior to them leaving home however, it will need to be reapplied during the day.

Our school has chosen to supply and reapply sunscreen as per the Departments sun safety policy (students will be supervised to apply sunscreen to themselves if possible). The product we will be using is "Ultra Protect" and has a 30+ protective factor. Allergies to sunscreen are usually caused by the perfumes and/or preservatives in the product not the sun protector factor. There are fragrance and preservative free sunscreens available and your doctor or pharmacist can advise you on an appropriate product. If your child is allergic to mainstream sunscreens we request that you provide the appropriate product to the school for your child's use only. If your child is unable to use any form of sunscreen for medical reasons please provide a statement from your doctor providing this information.

Yours sincerely

Christine Moulds (Principal)

-----PLEASE COMPLETE & RETURN TO YOUR CHILD'S TEACHER-----

- ☐ I understand that the school will be providing the sunscreen product "Ultra Protect" for application during the school day.
- ☐ I will be providing an alternative product to the school for my child's use.
- ☐ My child is unable to use any form of sunscreen and I have attached evidence from a medical practitioner.

Child's Name: _____ Class: _____

Parent Name: _____ Signature _____

What's On

CareFlight's Christmas Magic Mania

PO Box 6333 Alexandria 2015

Telephone: 02 96993925

Fax: 02 96901280

"CAREFLIGHT'S Christmas MAGIC MANIA"

A project by Magic Mania for special needs children and families throughout New South Wales

We would like to invite any members and their families from your organisation to "MAGIC MANIA". It will be held on **Saturday 14th December 2019** at **QUAYCENTRE (Sydney Olympic Park Sports Centre)**, Homebush.

There are three (3) available show times commencing promptly at **12.30pm, 2.30pm and 4.30pm**, although we ask those needing assistance to arrive **at least 30 minutes prior**.

We are offering FREE tickets to this event to all special needs as well as care givers and family members who would like to attend. These tickets to you are completely **FREE OF CHARGE** and made possible by the generosity of your local business and professional people. If you could please reply by email or fax by Wednesday 11th December. We request that you email or fax us the number of tickets you require. If you need any further information, please do not hesitate to call **Jenny Goodman** during business hours on

02 9699 3925

Yours sincerely

Jenny Goodman

Jenny Goodman project coordinator
Magic Mania



FOR YOUR FREE TICKETS PLEASE EMAIL OR FAX:

FAX: 02 9690 1280

careflightsmagicandmoviemania@magicmania.com.au



NUMBER OF TICKETS: **SHOW 1 @ 12.30PM** _____

SHOW 2 @ 2.30PM _____

SHOW 3 @ 4.30PM _____



CONTACT NAME: _____

ORGANISATION from or heard about show from _____

Your Tel: _____ Your Fax: _____

POSTAL ADDRESS: _____

YOUR EMAIL ADDRESS: _____

☐ Please tick if you would like your tickets emailed (saves paper and postage)
Proudly supporting

CareFlight

Po Box 6333 Alexandria 2015